

Wenceslas Behm

Oboe Concerto in C Major (c. 1770)

Oettingen-Wallerstein Collection

Edition by Charles-David Lehrer

1 Allegro.

Timpani in C

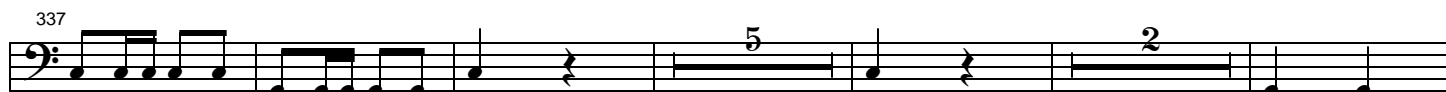
The musical score for the Timpani part in C major, measures 1 to 191. The score is written in bass clef with a common time signature (C). It features various rhythmic patterns, including eighth and sixteenth notes, and rests. Dynamic markings include *f* (forte), *ff* (fortissimo), and *sfz* (sforzando). Rehearsal marks are indicated by numbers 7, 20, 28, 36, 79, 97, 137, 143, 184, and 191. Some measures contain multi-measure rests with numbers indicating the duration (e.g., 8, 2, 37, 13, 2, 34, 6, 31, 2). The score ends with a double bar line and a 2/4 time signature.

Measures 1 to 191 are shown, including dynamic markings (*f*, *ff*, *sfz*) and multi-measure rests (e.g., 8, 2, 37, 13, 2, 34, 6, 31, 2).

198

Adagio.

Tacet

Presto.*f**f**f*

